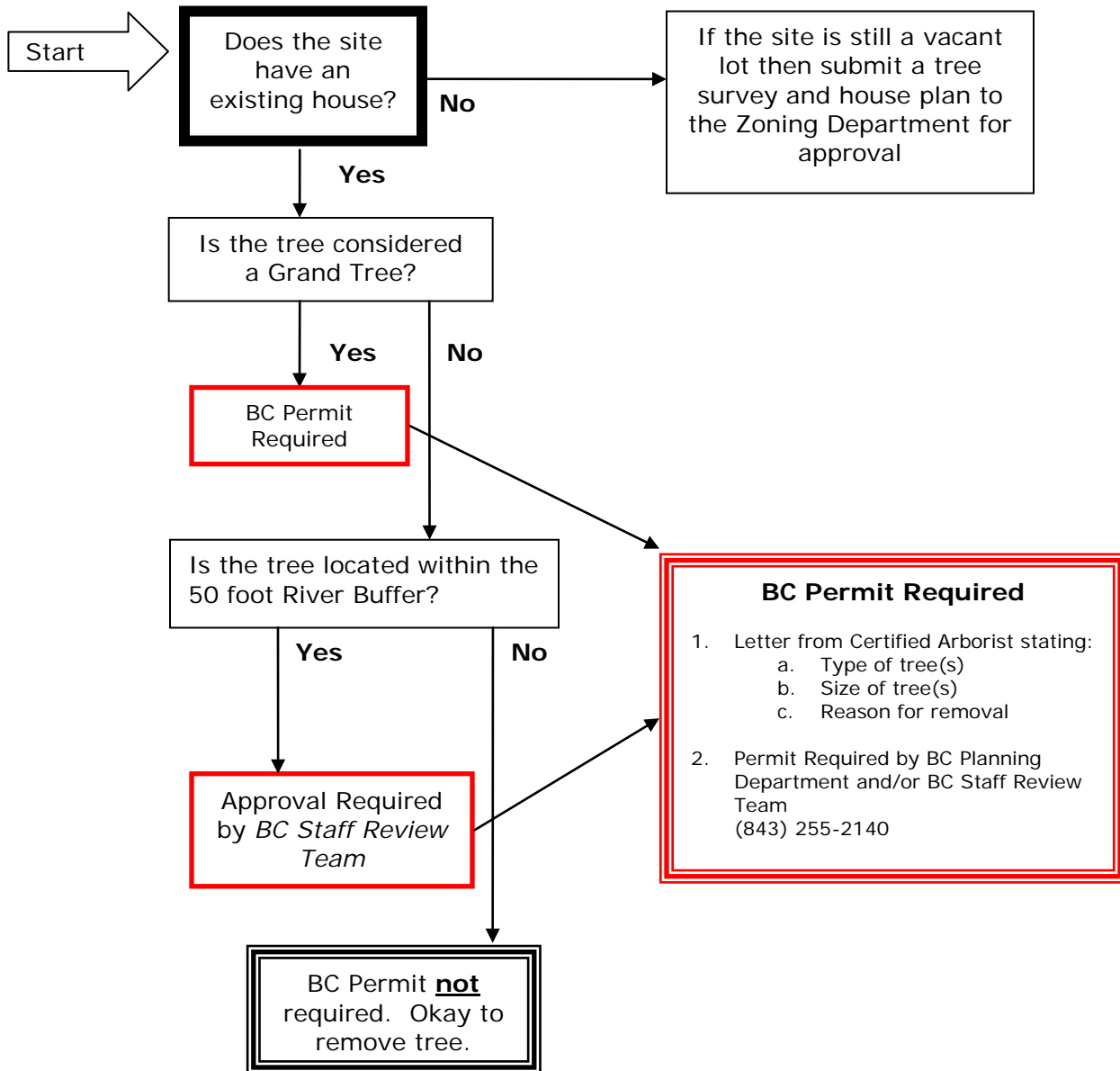


# REMOVAL OF TREES ON SINGLE FAMILY LOTS WITH HOMES

(Within Unincorporated Beaufort County)

Beaufort County Community Development Code: Division 5.11.100.F.1.a.



## Grand Trees

1. Live oak, Black walnut, or Longleaf pine that are equal to or greater than a diameter of 24 inches DBH.
2. Loblolly pine, Slash pine, or Shortleaf pine that are equal to or greater than a diameter of 36 inches DBH.
3. All other species of trees, not defined above, that are equal to or greater than a diameter of 30 inches DBH except those identified as invasive species in Table 5.11.100.C.

Please Note that some communities require Architectural Review Board, Home Owners Association, or Property Owners Association approval in addition to Beaufort County approval for tree removal.